



Welcome to  
Brookfield Park Primary School  
Reception Class 2024  
Induction Meeting



# Our Brookfield Park Promise



We are kind

We are resilient

We take ownership

---

*'Nurture, include and inspire to succeed'*

**Our Ethos, Vision and Mission Statement can be found on our  
website**

**[brookfieldparkprimary.co.uk](http://brookfieldparkprimary.co.uk)**



# Getting Ready for Starting School

We encourage the children to become independent from when they first start school.

Here are some key skills which will help them as they start school:

Can they put their coat on and off and zip it up?

Can they take their shoes/wellies on and off?

Can they take their jumper/cardigan on and off?

Can they use a knife, fork and spoon?

Can they recognise their name?

Can they go to the toilet independently; washing & drying their hands?

Are they happy to play with their new friends and share toys?

Can they sit and listen to a story?

Can they sit and do a simple jigsaw or craft for 5 minutes?



# Our School Day

8.55am-3.15pm

Reception class enter EYFS via the far door from the EYFS outdoor area.

Our EYFS unit can be reached by entering the school grounds via the gates to the left of the main building as you look at the front entrance. Then continue to walk around to the side of the building, through the extension doors and through the blue gate into our EYFS outdoor area.

The gate at the back of school is also opened at the beginning and end of the school day.

# EYFS Staff

❖ Miss Helen Chivers  
(Reception Class Teacher)

❖ Mrs Wendy Bingham (Nursery HLTA TA3)



Mrs Washington is the Reception welfare assistant

# Early Years Foundation Stage (EYFS)

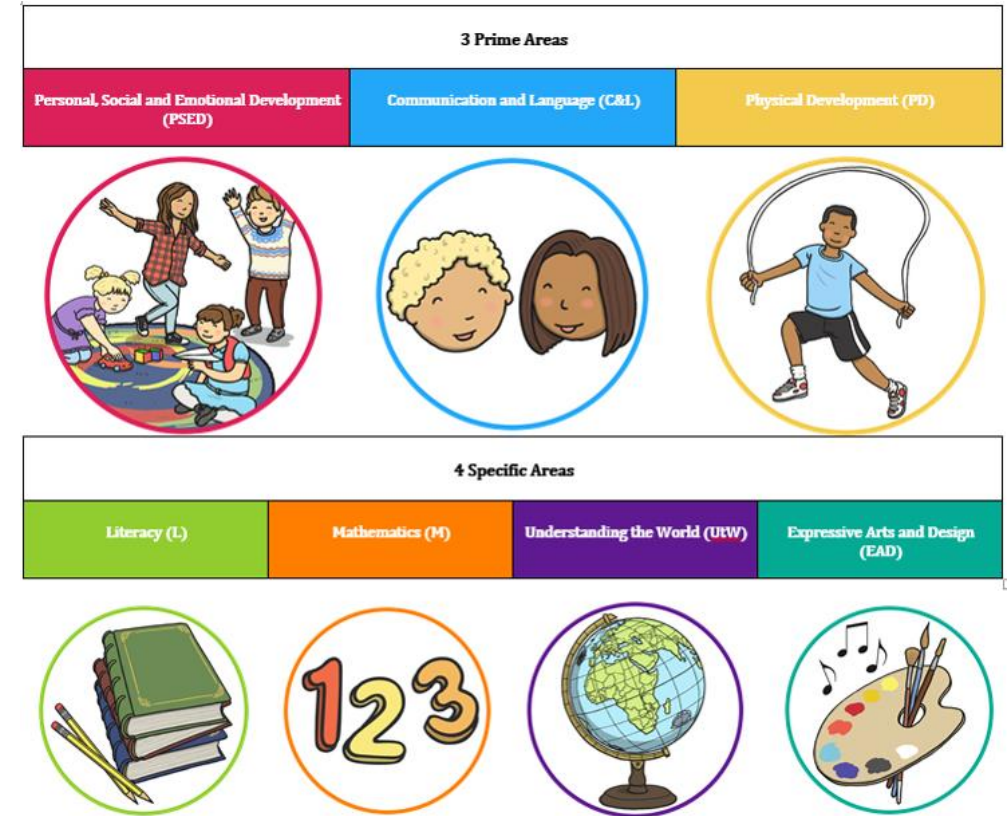
We are a purpose built Early Years Foundation Stage Unit with excellent inside and outside areas of continuous provision. Nursery and Reception pupils work and play together but also have their own focused whole class and adult directed activities.

The areas of continuous provision include technology area, sensory room, outdoor, role-play, mark-making, creative area, malleable, sand, water, painting, small-world, construction and reading.

# 7 Areas of Learning

We follow the Early Years Statutory Framework and teach the 7 areas of learning and development. These are:-

1. Communication and language
2. Physical development
3. Personal, social and emotional development
4. Literacy
5. Mathematics
6. Understanding the world
7. Expressive arts and design



# Prime Areas

## Communication and Language

It is very important to talk to your child & build their vocabulary.

Children need to be able to follow rules and routines in school as well as added instructions from staff throughout the day.

Can you sit for a full story and talk about what you have heard?

Can you hold a conversation for many turns with peers and staff?

Sing lots of Nursery rhymes to help with our learning and understanding

Answer why questions e.g. why was the caterpillar so fat (he ate too much!)

# Prime Areas

## Physical Development

It is very important to build strength in our bodies.

This will help us with daily tasks for the rest of our lives.

We are split into Gross Motor Skills (big body movements) and Fine Motor Skills (smaller, more precise hand movements)

Gross Motor - Can you:

Ride a bike

Climb confidently

Lift appropriately heavy objects e.g. tyres

Kick, catch and throw a ball

Make your arms move round in a circle?

Try cosmic kids yoga on Youtube for some fun stretching

Fine Motor – Can you:

Make meaningful marks that represent a picture

Draw closed shapes e.g. square, triangle, circle

Write your name

Use tools e.g. scissors, tweezers, rolling pins, playdoh cutters, knife and fork to eat

# Prime Areas

## Personal Social Emotional Development

We want children to be confident and independent in school.

Can you:

Put on your coat and zip it up

Get changed for PE

Put on your shoes

Use the toilet and wash your hands

Brush your teeth

Write your name on you art work

Use a knife and fork at dinner time

Understand your emotions and find ways to overcome negative feelings

# Phonics

This is how we teach letter sounds and words progressing to reading simple words, captions and sentences.

We use the Twinkl phonics scheme.

Practice recognising letters (graphemes) at home, say the sound (phoneme).

What other sounds can you hear in a word

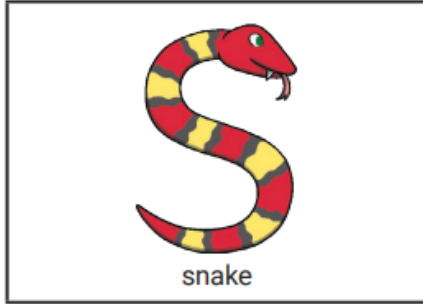
e.g. c-a-t = cat



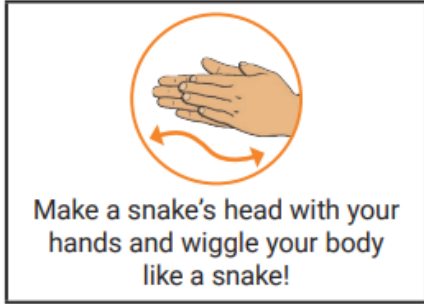
Today, we have been learning s.



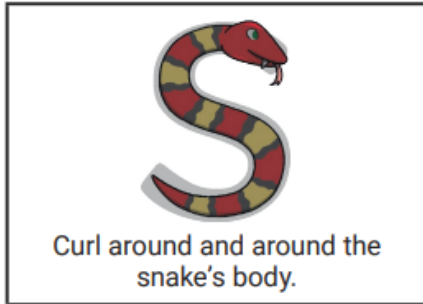
**Picture**



**Action**



**Formation**



**Song**

*(To the tune of 'Aiken Drum')*  
We saw a snake out in  
the woods,  
s - s - s  
s - s - s  
We saw a snake out  
in the woods  
And the snake went s, s, s.

**Word List**

Sound out these words for your child. Can they hear the word you are saying?

sun	yes
...	...
Sam	bus
...	...
sad	...
...	



# Literacy - Reading

When your child is confident with segmenting (chopping up words) and blending (putting the sounds together to read the words), they will receive a reading book to develop their skills further at home.

We ask that you read every night for a few minutes, as little and often is the best form of learning for children in Reception, as it will help to embed what they know and what they are learning.

# Literacy - Writing

Each week we will have a book focus for our Literacy work. We will be learning new vocabulary to describe characters and situations.

As we learn sounds through our Phonics, we will begin to write these sounds and put them together to form words. Starting with labelling initial sounds, then writing key words and labels, followed by simple sentences, based on our topics.

# Maths

We follow the White Rose Maths scheme.

In Reception we will learn numbers to 20, as well as number bonds to 5 and 10 e.g.  $2+3=5$  or  $6+4=10$

We will create and fix repeating patterns (red blue red blue)

We will also learn about 3D shapes and count how many sides and vertices each one has. Can you spot any 2D and 3D shapes at home?

We will discuss time, and ways to tell the time

Along with many more topics!

Keep practicing your number recognition at home.



# Useful Documents

[EYFS Statutory Framework \(from 1 September 2021\)](#)

[https://assets.publishing.service.gov.uk/government/uploads/system/uploads/attachment\\_data/file/974907/EYFS\\_framework\\_-\\_March\\_2021.pdf](https://assets.publishing.service.gov.uk/government/uploads/system/uploads/attachment_data/file/974907/EYFS_framework_-_March_2021.pdf)

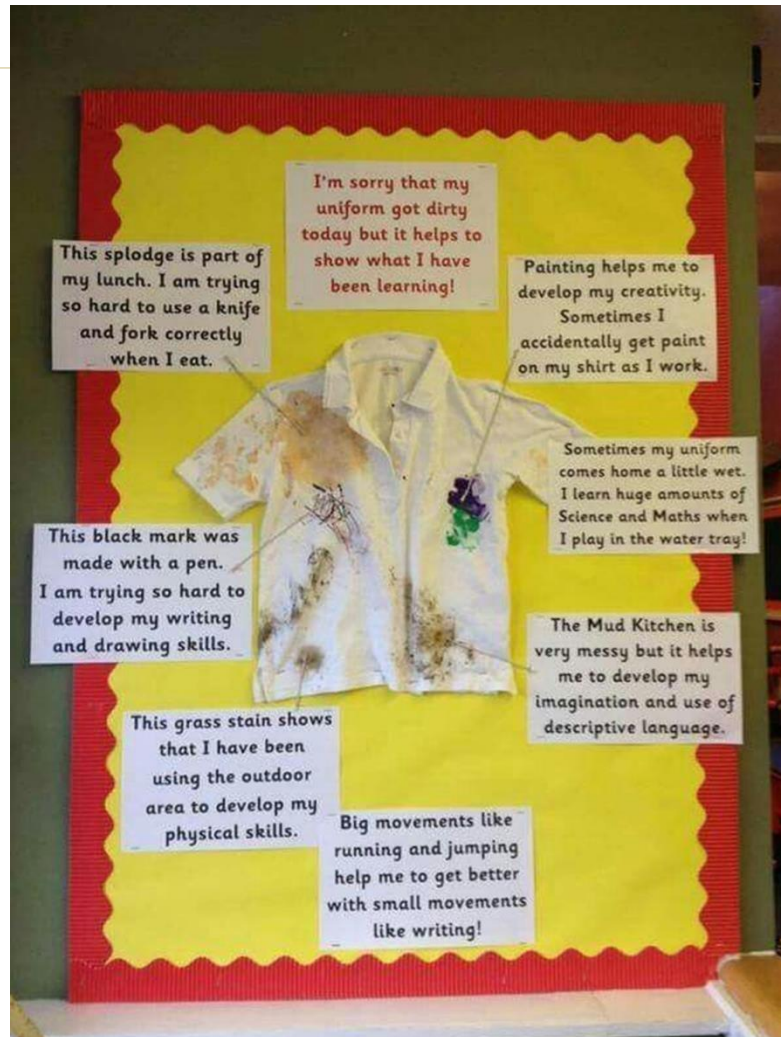
[Development Matters \(guidance to support planning in the early years\)](#)

[https://assets.publishing.service.gov.uk/government/uploads/system/uploads/attachment\\_data/file/988004/Development\\_Matters.pdf](https://assets.publishing.service.gov.uk/government/uploads/system/uploads/attachment_data/file/988004/Development_Matters.pdf)

# School Uniform



# Your Child Will Get Messy!



# Assessment



- We assess pupils when they first start in Reception and we assess the pupils regularly during activities and plan to meet their needs in all areas of learning and development.
- All Reception pupils will complete the Statutory Baseline Assessment within the first 6 weeks of starting school.
- We build on assessments made in previous settings and we assess pupils through games and activities at the beginning and then end of the year.
- In the Summer Term Reception pupils are judged to be either emerging or working at the expected level for each of the Early Learning Goals. This is statutory and parents/carers are informed of the assessments. It is also shared with the Year One teacher.
- The Early Learning Goals are included in your pack.

# Rewards

- ❖ One pupil each week receives a Pupil of the Week certificate for their good work.
- ❖ Pupils are rewarded with stickers and other certificates for good work.



# Attendance

- Pupils should attend school every day. Each week the class with the highest attendance receives the attendance trophy.
- Parents/carers should contact school if your child is ill and unable to attend. Pupils should not be off with only minor ailments.
- It is school policy to contact parents/carers to find out the reason your child is absent. Holidays will not be authorised during term time (see school term dates). There are some exceptional circumstances.
- A form will need to be completed and a meeting held with Headteacher Mrs Sarah-Jane Whiteside.
- Please download the Studybug app for you to inform school of a reason for absence.

# Other activities and events



Photographs of our school activities are put on our Brookfield Park facebook, twitter and Instagram.

# Other important items

- School book bag which can be purchased at the school office for £5.
- Please bring a water bottle each day, this should be plastic (not too tall) with an easy top for the children to use independently. Please fill with water not juice.
- Once your child starts school you will be able to pay via the Teachers2Parents App.
- Please bring a lunchbox if you are providing your own lunch. Your child is entitled to a free hot or cold school meal. You will be given a menu to choose your child's option.
- Sensible warm coat with a zip please.
- School shoes with a Velcro strap, not laces please.

# Snack money

We ask for £1.50 each week to pay for a range of healthy snacks. You can also pay for the full half-term. This is paid in class.

You will be asked if you would like to pay for milk from the term your child turns 5 years old. Before this time your child will receive free school milk.



# Breakfast Club

We operate a breakfast club from 7.45 am until 8.55am. Pupils who are in receipt of the Pupil Premium grant can attend free of charge. A range of breakfast is provided as well as fun and social activities. This is run from our school hall and pupils can drop in. This is run by Mrs Littler

## Prices

£3:50 per session (8:00 to 8:55) then £2 for any other siblings

£4 per session (7:45 to 8:55) per child.

If you use the breakfast club 5 days a week you will only pay for 4 days.

# After School Club (3.15pm Club)

We operate an after school club from 3.15pm until 5.30pm.

Your child/children must be booked in by 1pm on the day at the latest. This club is run by Mrs Shuttleworth from EYFS.

- £6.50 from 3.15pm to 5.30pm
- £4.50 from 3.15pm to 4.30pm
- If your child attends an extra-curricular activity club that day then the payment will be £4.50 from the club finishing until 5.30pm.

Bookings must be made by Thursday the week before you want to attend.

# There will be times when your child needs first aid

- ❖ Medical health care forms to be completed and handed back into school ASAP.
  - ❖ Inhalers – Must send one in to be kept in class.
  - ❖ Sun cream applied before school & children will only be allowed out if wearing a sunhat.
  - ❖ Rashes – We will ask you to get these confirmed by a Doctor or Nurse.
  - ❖ Sickness – Must be kept off for 48 hours from the last episode.
  - ❖ Accident – Bump letter – MAJOR BUMPS – You will be informed by a phone call.
  - ❖ Please check regularly for nits, and tie up any hair longer than shoulder length.
- 
- ❖ Any questions please contact me at school 01695 724042  
or email [reception@brookfieldpark.lancs.sch.uk](mailto:reception@brookfieldpark.lancs.sch.uk)



# Other Information

- ❖ Please let me know if any other members of family will be collecting children at the end of the day. If we haven't been notified, we will have to ring you before dismissing your child.
- ❖ Any questions please contact me at school 01695 724042 or email [reception@brookfieldpark.lancs.sch.uk](mailto:reception@brookfieldpark.lancs.sch.uk)