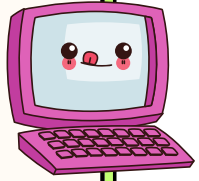


September
2025



Classroom News

Welcome officially to year 2! If you have any questions or concerns, please contact me via hazel@brookfieldpark.lancs.sch.uk.

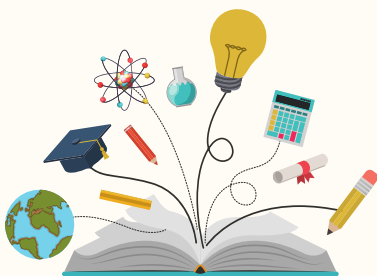


Information

- Snacks are 20p per day or £1 a week. This is usually biscuits but we also do treats on special occasions too!
- P.E. is on **Wednesday & Thursday**. Earrings should NOT be worn on PE days. Please leave P.E kits in school (except of course over the holidays).
- Please see the uniform policy for KS1 clothing including P.E kits.
- Please hear your child read every day. Just ten minutes should do it. Practise any words too that they may get, or help them with their homework sheet.
- We need the children to bring their book in **every** day. Fun books will be given out for the children. Please make sure they are returned.
- Reading books will be kept until the child reads it fluently though more importantly, understands what has been read.
- Spellings and homework to be given out on Monday. Homework is due in on Friday and spellings will be tested on Friday.



Curriculum



- History: World War 1 Remembrance. (T1)
- Geography: Magical Mapping (T2)
- Science: Living things
- English: persuasive letter and poetry
- Art: weaving, frottage and Max Ernst
- PHSCRE: Friendships
- R.E: Islam & Christianity
- Maths: Place value
- Design and Technology: Textiles
- Music: charanga
- Computing: systems and networks

