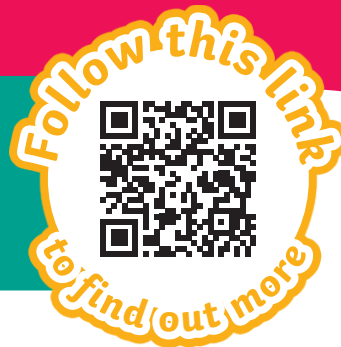


This activity booklet is also an answer booklet for a **GIANT Activity Mat** - you could get all these activities and more each month through your letterbox.



Activity Booklet

Music

Ages
9 - 11



Instrument Jumble

The letters in the names of the instruments have got muddled up! Can you find the instrument names?



t u g a i r

○ ○ ○ ○ ○ ○

p a x o h e n o s

○ ○ ○ ○ ○ ○ ○ ○ ○ ○

l e e k u l a

○ ○ ○ ○ ○ ○ ○

t r a i n b o u m e

○ ○ ○ ○ ○ ○ ○ ○ ○ ○



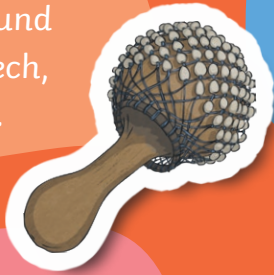
Musical Genre Mix-Up

Read the descriptions of the musical genres and match them to their names.

Can you find the name of an artist for each type of music?



This type of music is based around rhythmic speech, like poetry.



Pop

A pop artist is _____



This music was a very popular style of dance music originating in the 1970s. It is up-tempo with a strong beat and can include elements of soul and funk, with electronic effects. You can't help but dance to it!



Rap

A rap artist is _____

This music began in the 1920s and the time between 1935 and 1946 was known as the 'Swing Era'. Music at this time had a strong rhythm. Wind, string or brass instruments would accompany vocals.

Disco

A disco artist is _____

This style of music began in the southern United States, with its centre in Nashville, Tennessee. Instruments include fiddles, banjos, guitars, pedal steel guitars, keyboards and drums. Song words often talk about aspects of working-class American life.

Big Band and Swing
A big band and swing artist is _____

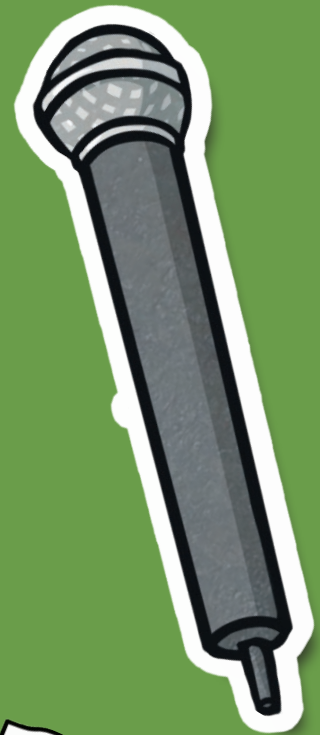
This is music that is popular with a large number of people. It can often include elements from other musical genres, but it often has a catchy tune and lyrics.

Country and Western

A country and western is _____

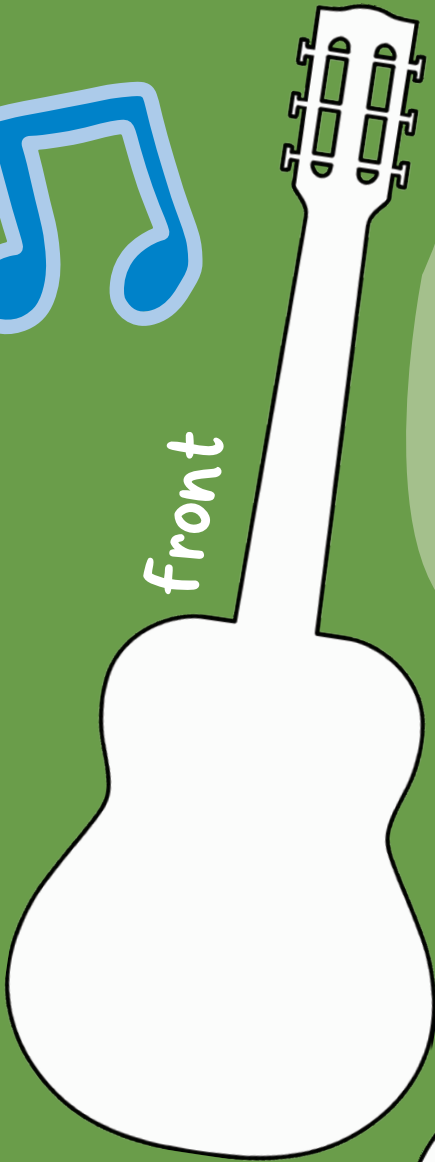


Guitar Design Challenge



Rock band The Lightning Dogs have asked you to design a new guitar for their lead singer and guitarist, Roxy Bulldog. She loves bright colours, music and cycling. Design an original front and back of her new guitar.

front

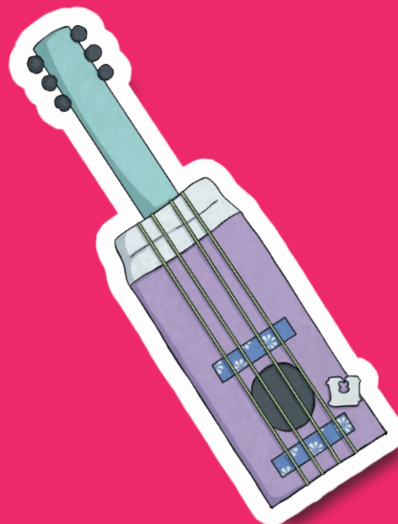
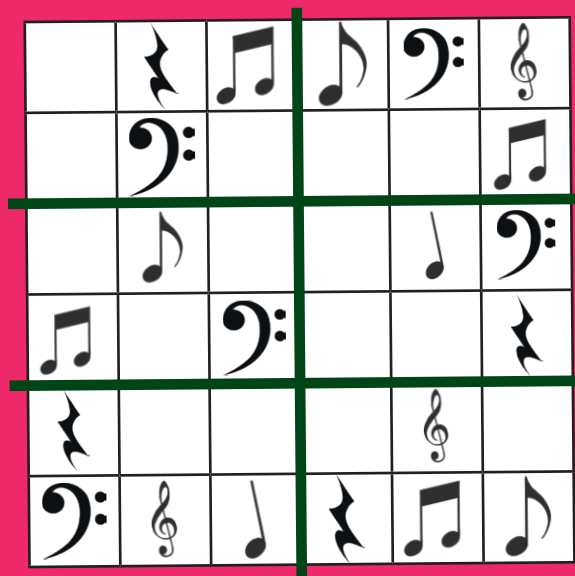


back



Musical Sudoku

This sudoku puzzle contains musical notation instead of numbers. Draw symbols into the spaces so that every line and square contains only one of each symbol.



The Science of Sound

What do you know about how sounds are made? See if you can fill in the missing words to make the sentences correct.



Sound is caused by _____.



Louder sounds are created by _____ vibrations.

When playing a guitar, the shorter the string, the _____ the sound is.

On a set of pan pipes, the longest pipe will make the _____ sound.

A sound will seem quieter as you move _____ away from its source.



Sound travels as a _____.



Instrument Family

Sorter

Sort the instruments into their correct categories.

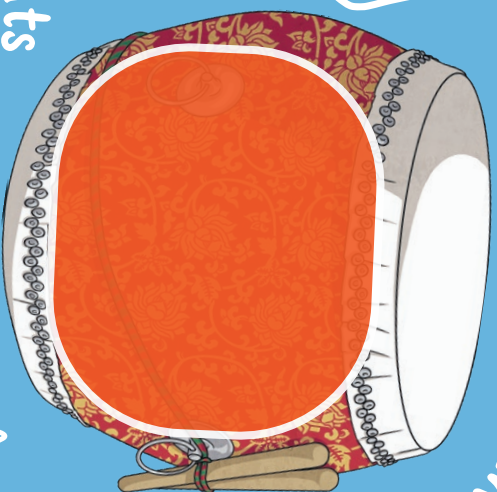


glockenspiel

Woodwind Instruments

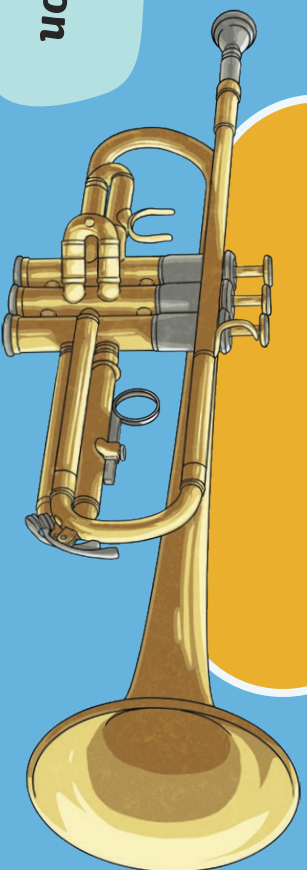


Percussion Instruments

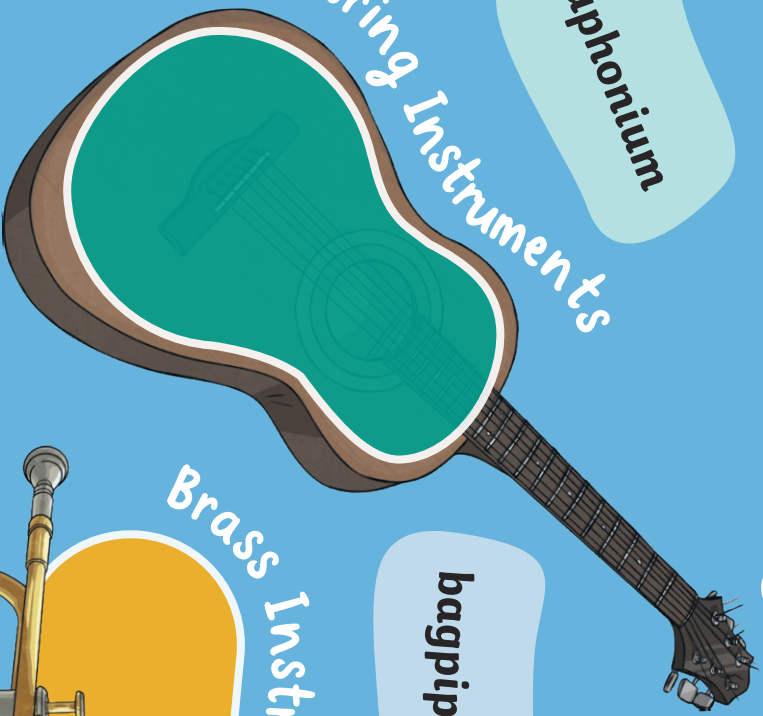


bagpipes

Brass Instruments



String Instruments



euphonium

mandolin

bassoon

cello

trombone

cowbell

Making Drums

What exactly makes a drum work? There are lots of different types of drums and they're often made and played very differently and therefore sound very different.

Can you make your own drums?

You can use recyclable objects (such as boxes or bottles) and test how different materials make different sounds.



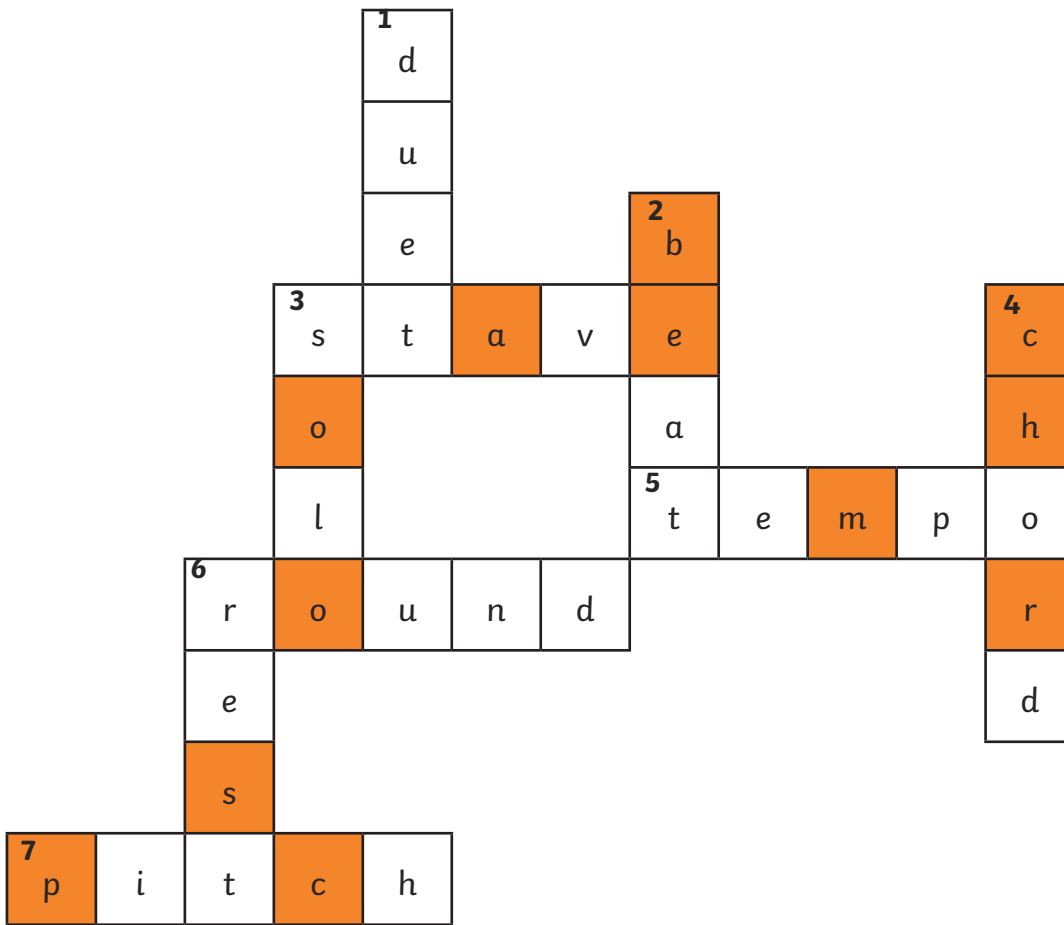
Can you make one drum that makes a lower sound than another? What factors might affect the sound, such as material or size? You could do some research to find out how different drums make different sounds.

Here's a handy list of different drums you could research and try to make:

- acoustic drum set
- bongos
- steel drum
- tabla
- tambourine
- bodhran
- goblet drums
- djembe
- talking drum



Musical Terms Crossword - Answers



Letters highlighted in orange:

b a e c o h m o r s p c

Now, unscramble these letters to create two words to fit in these sentences:

A person who writes music is called a **composer**. A famous German composer was Johann Sebastian **Bach**.

Instrument Jumble – Answer

tugair

guitar

paxohenos

saxophone

leekulu

ukulele

trainboume

tambourine

Curves from Straight Lines – Answers

This type of music is based around rhythmic speech, like poetry.

Pop
A pop artist is **Harry Styles, Ariana Grande**

This music began in the 1920s and the time between 1935 and 1946 was known as the 'Swing Era'. Music at this time had a strong rhythm. Wind, string or brass instruments would accompany vocals.

This music was a very popular style of dance music originating in the 1970s. It is up-tempo with a strong beat and can include elements of soul and funk, with electronic effects. You can't help but dance to it!

Rap
A rap artist is **Queen Latifah, Jay-Z**

Disco
A disco artist is **Donna Summer, The Bee Gees**

This is music that is popular with a large number of people. It can often include elements from other musical genres, but it often has a catchy tune and lyrics.

This style of music began in the southern United States, with its centre in Nashville, Tennessee. Instruments include fiddles, banjos, guitars, pedal steel guitars, keyboards and drums. Song words often talk about aspects of working-class American life.

Big Band and Swing
A big band and swing artist is **Carrie Underwood, Johnny Cash**

Country and Western
A country and western is **Frank Sinatra, Ella Fitzgerald**

Musical Sudoku - Answers

♪	♯	♪♪	♪	♭	♪
♪	♭	♪	♪	♯	♪♪
♪	♪	♯	♪♪	♪	♭
♪♪	♪	♭	♪	♪	♯
♯	♪♪	♪	♭	♪	♪
♭	♪	♪	♯	♪♪	♪

The Science of Sound - Answer

Sound is caused by **vibrations**.

When playing a guitar, the shorter the string, the **higher** the sound is.

Louder sounds are created by **larger** vibrations.

On a set of pan pipes, the longest pipe will make the **lowest** sound.

A sound will seem quieter as you move **further** away from its source.

Sound travels as a **wave**.

Instrument Family Sorter - Answer

String Instruments:

cello, mandolin

Woodwind Instruments:

bassoon, bagpipes

Percussion Instruments:

glockenspiel, cowbell

Brass Instruments:

euphonium, trombone

***Disclaimer:** We hope you find the information on our website and resources useful. As far as possible, the contents of this resource are reflective of current professional research. However, please be aware that every child is different and information can quickly become out of date. The information given here is intended for general guidance purposes only and may not apply to your specific situation.